



Ffestiniog Railway Society
Cymdeithas Rheilffordd Ffestiniog

I enclose a donation of £ for the
Boston Lodge Interpretation & Development Project Appeal

Name:

Membership No. (if applicable):

Full Address:

.....

..... PostCode:

Ffestiniog Railway Society – Charity No. 1064178

I want the Charity to treat all the contributions I have made for the six years prior to this date, and all the contributions I will make from the date of this Declaration, until I notify you otherwise, as Gift Aid donations. The Society will claim 25p of tax on every £1.00 I give. I am a UK taxpayer and understand that, if I pay less Income Tax and/or Capital Gains Tax in the current tax year than the amount of Gift Aid claimed on all my donations, it is my responsibility to pay the difference.

Signed: Date:

Please Note:

You must have paid enough UK Income Tax or Capital Gains Tax to cover all charitable donations. Other taxes such as Council Tax and VAT do not qualify.

Please notify the Society if you:

1. Want to cancel this declaration.
2. Change your name or home address.
3. No longer pay sufficient tax on your income and/or Capital Gains Tax to cover the Gift Aid contribution.

If you pay income tax at the higher or additional rate you must include all your Gift Aid donations on your Self Assessment tax return if you want to receive the additional tax relief due to you.

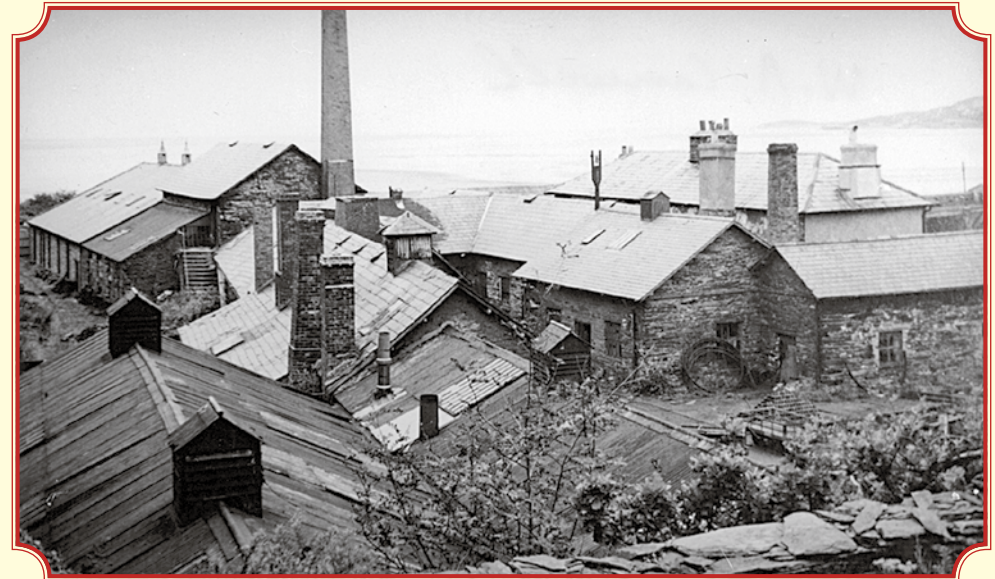
Please tick if you require a written acknowledgement of this donation.

If you would like to give online or by standing order, please refer to the Society website www.ffestiniograilway.org.uk where you will find our privacy policy.

You may also give a donation to this appeal by **sending a cheque, payable to the Ffestiniog Railway Society**, along with this form, to The Secretary, Ffestiniog Railway Society, Harbour Station, Porthmadog, LL49 9NF. Please do not forget to gift aid your donation if you are a taxpayer.

The Boston Lodge

Interpretation & Development Project



FUNDRAISING APPEAL



FFESTINIOG RAILWAY SOCIETY
FFESTINIOG & WELSH HIGHLAND RAILWAY TRUST

The Ffestiniog Railway Company, the Ffestiniog & Welsh Highland Railways Trust, and the Ffestiniog Railway Society (FRS) are delighted that the railway has been awarded a £3,140,000 grant from the National Lottery Heritage Fund (NLHF) to carry forward the *Boston Lodge Interpretation and Development Project*. This award will help ensure the conservation of the fabric of the world's oldest continuously-operated railway works which is now part of the UNESCO *Slate Landscape of Northwest Wales World Heritage Site*.

The project will involve the restoration, repair or re-creation of a number of Grade II listed buildings across the Boston Lodge site, with major attention being focused on the historic Top Yard, the area seen in the photographs in this leaflet. The work will ensure the future of these buildings whilst at the same time ensuring that they are of practical use within the context of a very active engineering works. It is also planned that volunteers will lead a sub-project to construct a locomotive shed



Boston Lodge Top Yard in 1957.

(Mike Davis)

specifically for the railway's smaller locomotives elsewhere on the Boston Lodge site, and that a waggon repair shed and much improved messing facilities will also be developed.

When the project is completed, visitors will be able to tour the workshops at Boston Lodge to find out about the history of the site and the activities that are currently undertaken there. This type of access is something that hasn't been possible in recent times and it will be transformative in terms of what our visitors can understand

about the railway and its history. To support this initiative, a new Teaching and Research Centre will be constructed.

Away from Boston Lodge, the NLHF project will facilitate the provision of information about the railway's history at a number of its stations. Various roles and traineeships will be created in order to deliver the buildings and interpretation components of the project and also to promote volunteering. Further details can be found at **nlhfproject.festrail.co.uk**.

The three-year NHLF project, with a total value of £4,370,000, is now underway. The FRS and the F&WHR Trust have each made a commitment to contribute £475,000 towards the match-funding requirements. This will be the largest grant made to the Company by the FRS in its nearly 70-year history.

We know that the conservation of the Boston Lodge site is of special interest to the many people who have been involved with the Ffestiniog Railway in the years since it reopened in 1955. We also know that members will want to assist with the development of education and volunteering, not only at Boston Lodge but throughout the whole railway.

We are therefore appealing for your donations to help the FRS meet its obligation to support this very special project. All contributions, however modest, will be greatly appreciated.